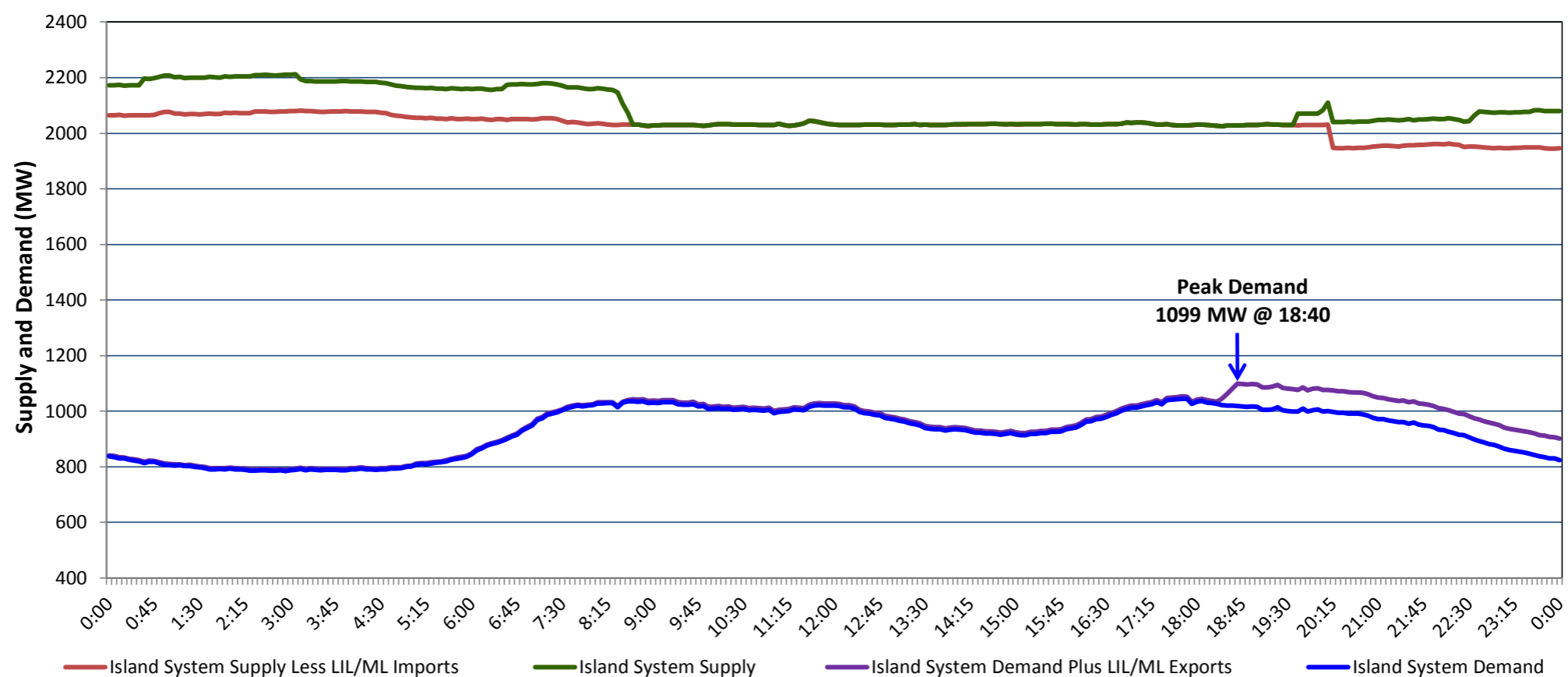


**Newfoundland Labrador Hydro (NLH)  
Supply and Demand Status Report Filed Friday, February 05, 2021**

**Section 1  
Island Interconnected System Supply, Demand & Exports  
Actual 24 Hour System Performance For Thursday, February 04, 2021**



**Supply Notes For February 04, 2021**

- A At 0801 hours, February 04, 2021, St. Anthony Diesel Plant available at 8.7 MW (9.7 MW).
- B At 1600 hours, February 04, 2021, St. Anthony Diesel Plant available at full capacity (9.7 MW).
- C At 2011 hours, February 04, 2021, Upper Salmon Unit unavailable (84 MW).

**Section 2  
Island Interconnected Supply and Demand**

Fri, Feb 05, 2021	Island System Outlook <sup>3</sup>			Seven-Day Forecast	Temperature (°C)		Island System Daily Peak Demand (MW)	
					Morning	Evening	Forecast	Adjusted <sup>7</sup>
Available Island System Supply: <sup>5</sup>	1,985	MW		Friday, February 05, 2021	3	0	1,190	1,088
NLH Island Generation: <sup>4</sup>	1,610	MW		Saturday, February 06, 2021	0	3	1,215	1,113
NLH Island Power Purchases: <sup>6</sup>	130	MW		Sunday, February 07, 2021	-1	-2	1,330	1,227
Other Island Generation:	245	MW		Monday, February 08, 2021	-3	-2	1,360	1,256
ML/LIL Imports:	-	MW		Tuesday, February 09, 2021	-4	-4	1,370	1,266
Current St. John's Temperature & Windchill:	6 °C	N/A	°C	Wednesday, February 10, 2021	-4	-3	1,345	1,241
7-Day Island Peak Demand Forecast:	1,565	MW		Thursday, February 11, 2021	-11	-7	1,565	1,459

**Supply Notes For February 05, 2021**

- Notes:
1. Generation outages for running and corrective maintenance are included. These are not unusual for power system operations. They generally do not impact customer supply. The power system operators schedule outages to system equipment whenever possible to coincide with periods when customer demands are low and sufficient supply reserves are available. However, from time to time equipment outages are necessary and reserves may be impacted.
  2. Due to the Island system having no synchronous connections to the larger North American grid, when there is a sudden loss of large generating units there may be a requirement for some customer's load to be interrupted for short periods to bring generation output equal to customer demand. This automatic action of power system protection, referred to as under frequency load shedding (UFLS), is necessary to ensure the integrity and reliability of system equipment. Under frequency events have typically occurred 5 to 8 times per year on the Island Interconnected System and the resultant customer load interruptions are generally less than 30 minutes. With the activation of the Maritime Link frequency controller during the winter of 2018, UFLS events have occurred less frequently.
  3. As of 0800 Hours.
  4. Gross output including station service at Holyrood (24.5 MW) and improved NLH hydraulic output due to water levels (35 MW).
  5. Gross output from all Island sources (including Note 4).
  6. NLH Island Power Purchases include: CBPP Co-Gen, Nalcor Exploits, Rattle Brook, Star Lake, Wind Generation and capacity assistance (when applicable).
  7. Adjusted for curtailable load, market activities and the impact of voltage reduction when applicable.

**Section 3  
Island Peak Demand Information  
Previous Day Actual Peak and Current Day Forecast Peak**

Thu, Feb 04, 2021	Actual Island Peak Demand <sup>8</sup>	18:40	1,099 MW
Fri, Feb 05, 2021	Forecast Island Peak Demand		1,190 MW

Notes: 8. Island Demand / LIL / ML Exports (where applicable) is supplied by NLH generation and purchases, plus generation owned and operated by Newfoundland Power and Corner Brook Pulp & Paper (Deer Lake Power, DLP).